

The European MSM Internet Sex Survey (EMIS)

Migrant men who have sex with men: an exploration of sexual risk in Europe

Percy Fernández Dávila

Stop Sida, Spain

Laia Ferrer

CEEISCAT, Spain

Cinta Folch

Jordi Casabona

Ulrich Marcus

Todd Sekuler

Àles Lamut

Axel J. Schmidt

the EMIS network



BACKGROUND

- Reasons for migration are diverse.
- Migrants represent a considerable proportion of AIDS and HIV reports in EU.
- Relatively little is known about the sexual health needs of migrant MSM in Europe.

Objective

- To describe the socio-demographic profile, sexual behaviours and other variables associated with HIV infection risk in migrant MSM compared with non-migrant MSM in Europe.

Methods

- Collective approach including more than 80 partners (governmental, academic and NGO) and social media.
- Online questionnaire in 25 European languages.
- Participants were reached mainly through national and pan-European web sites.
- 184,466 respondents (June through August 2010)
- Final sample for analysis: 174,209 men.

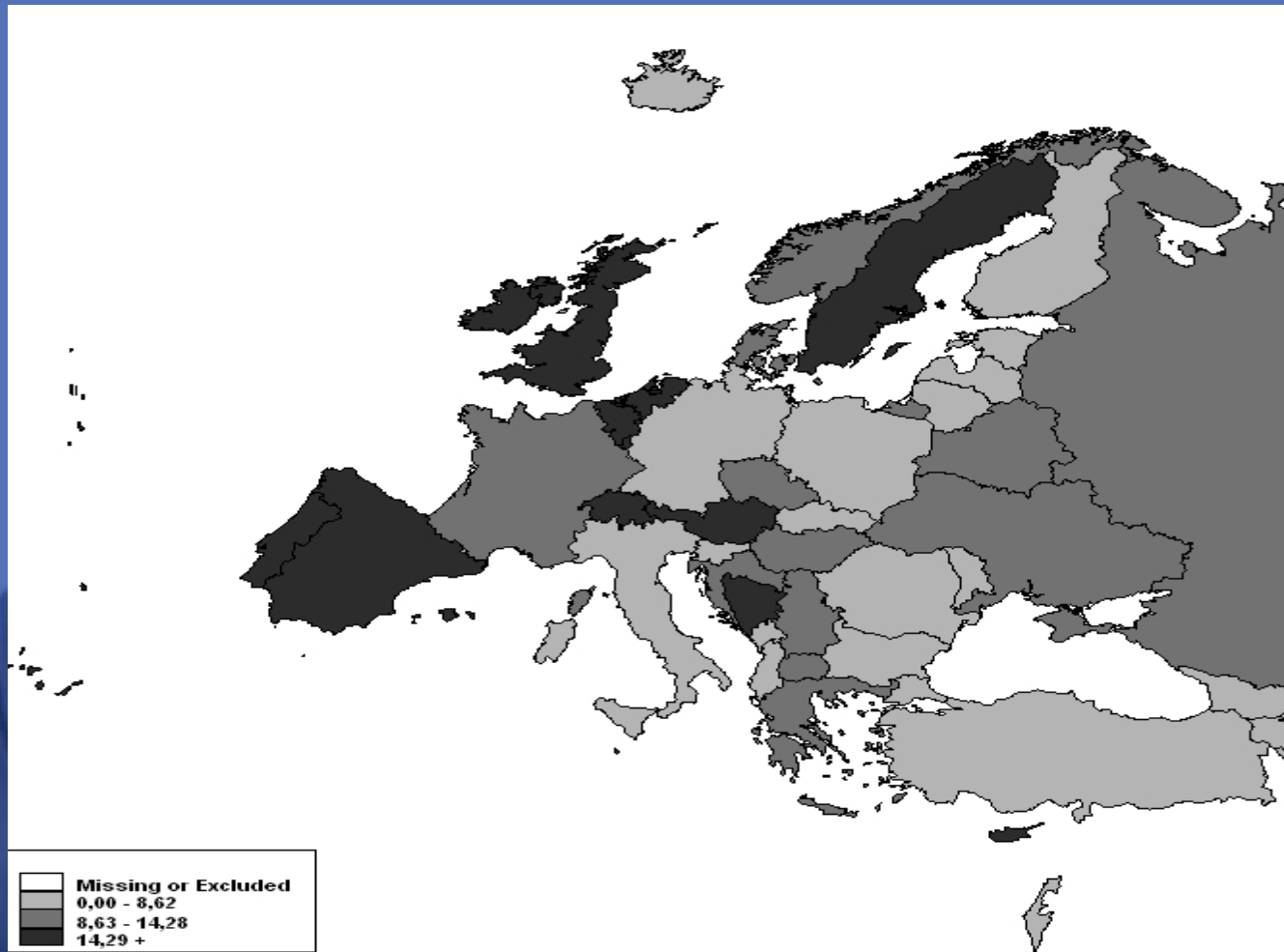
Definition of *migrant*

- EMIS define migrant as men who were born in a country other than their current country of residence.

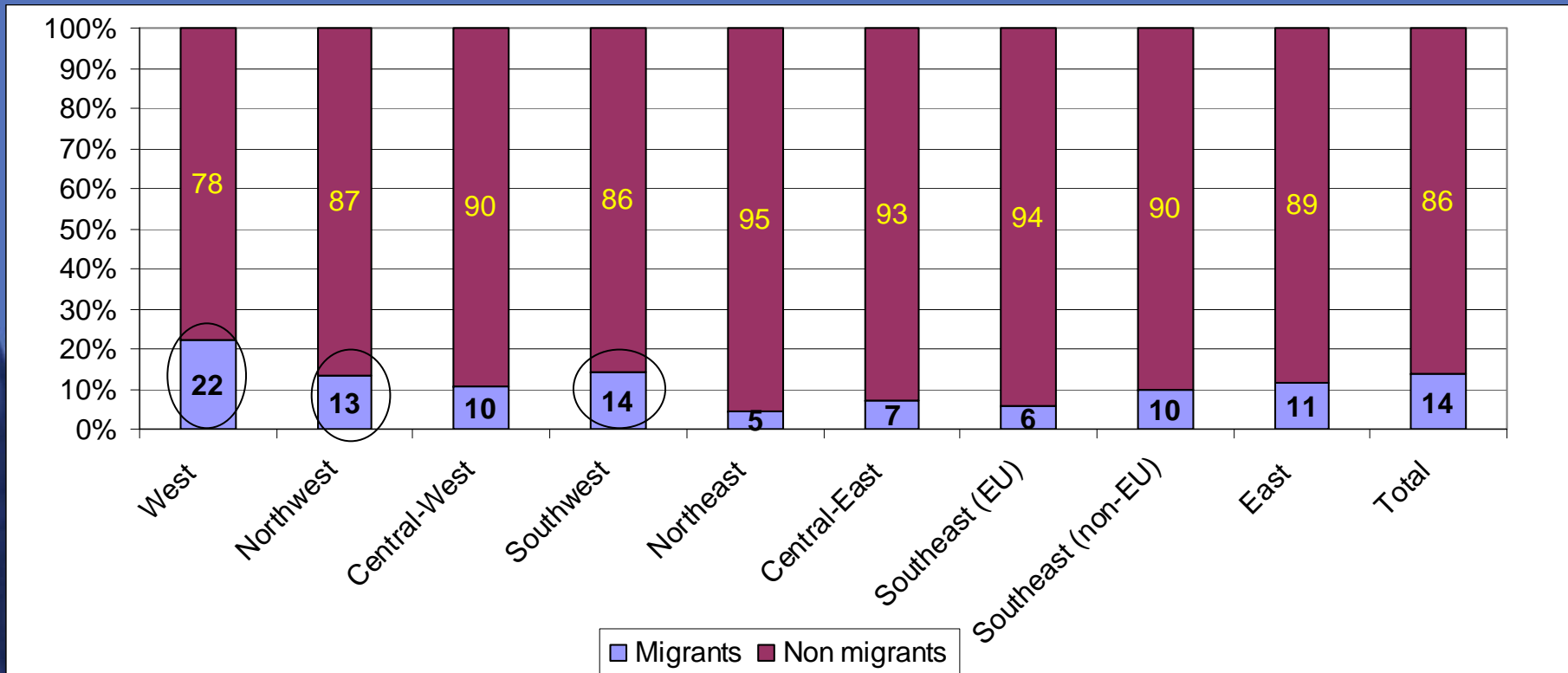


RESULTS

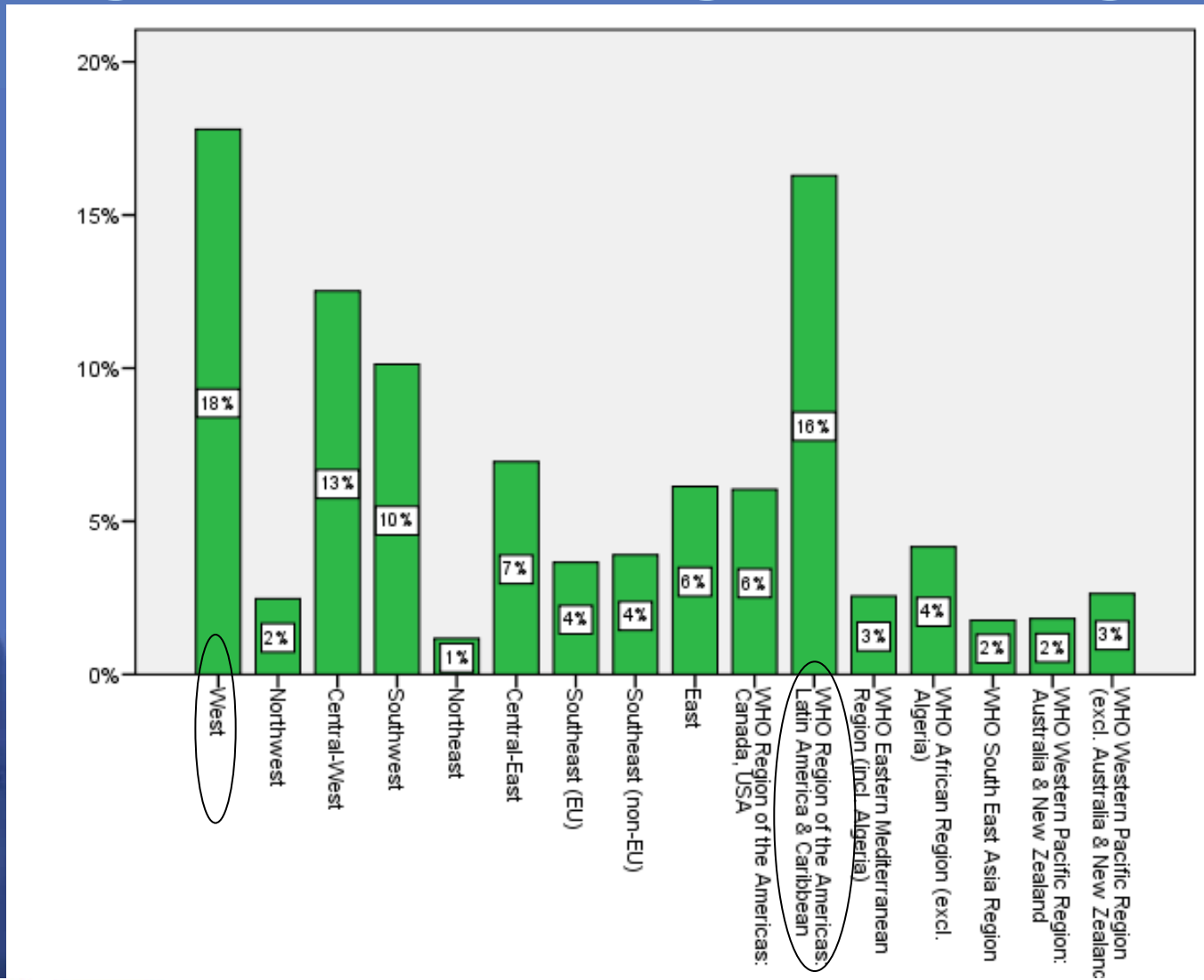
Proportion of migrants by country of residence (n=23293)



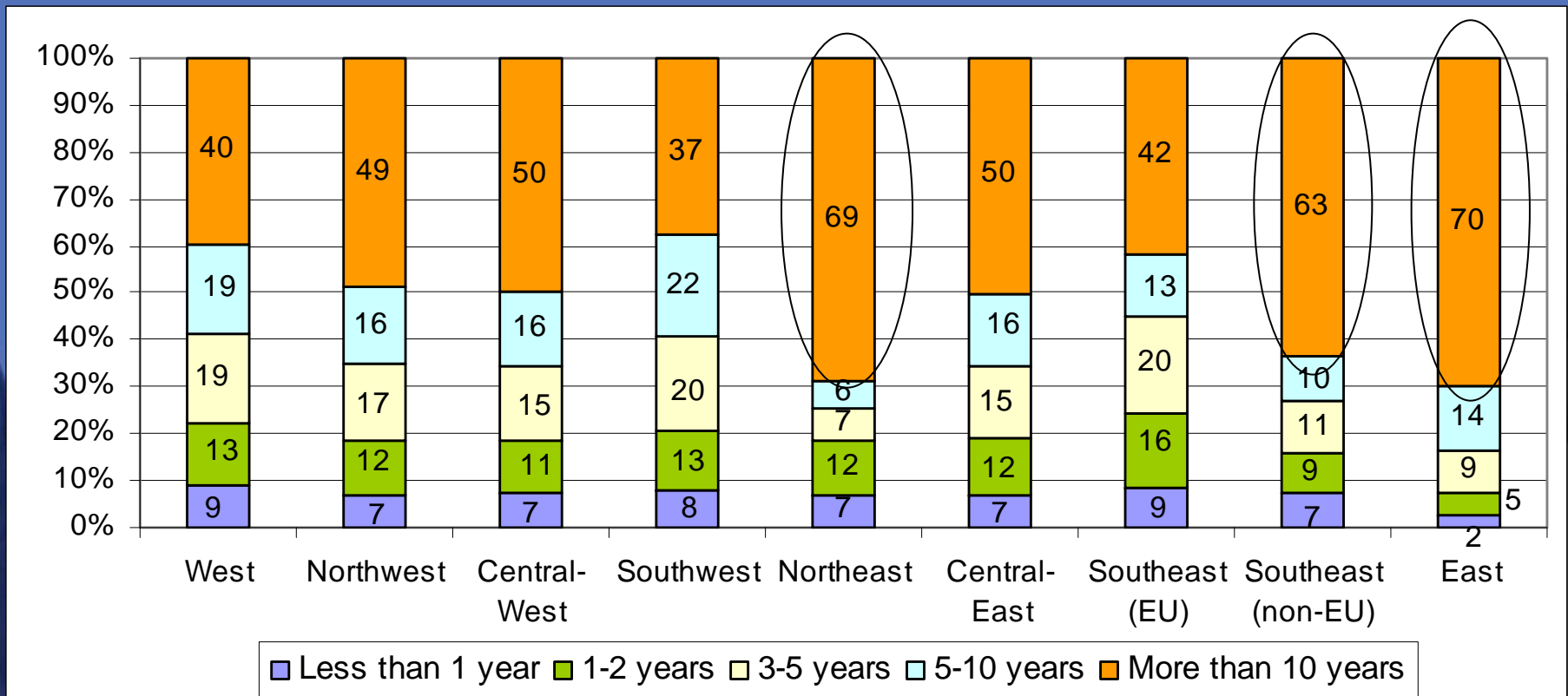
Migration status by EMIS sub-region of residence



Migrant MSM: Region of origin



Length of time migrant men are living in the country of residence by sub-region

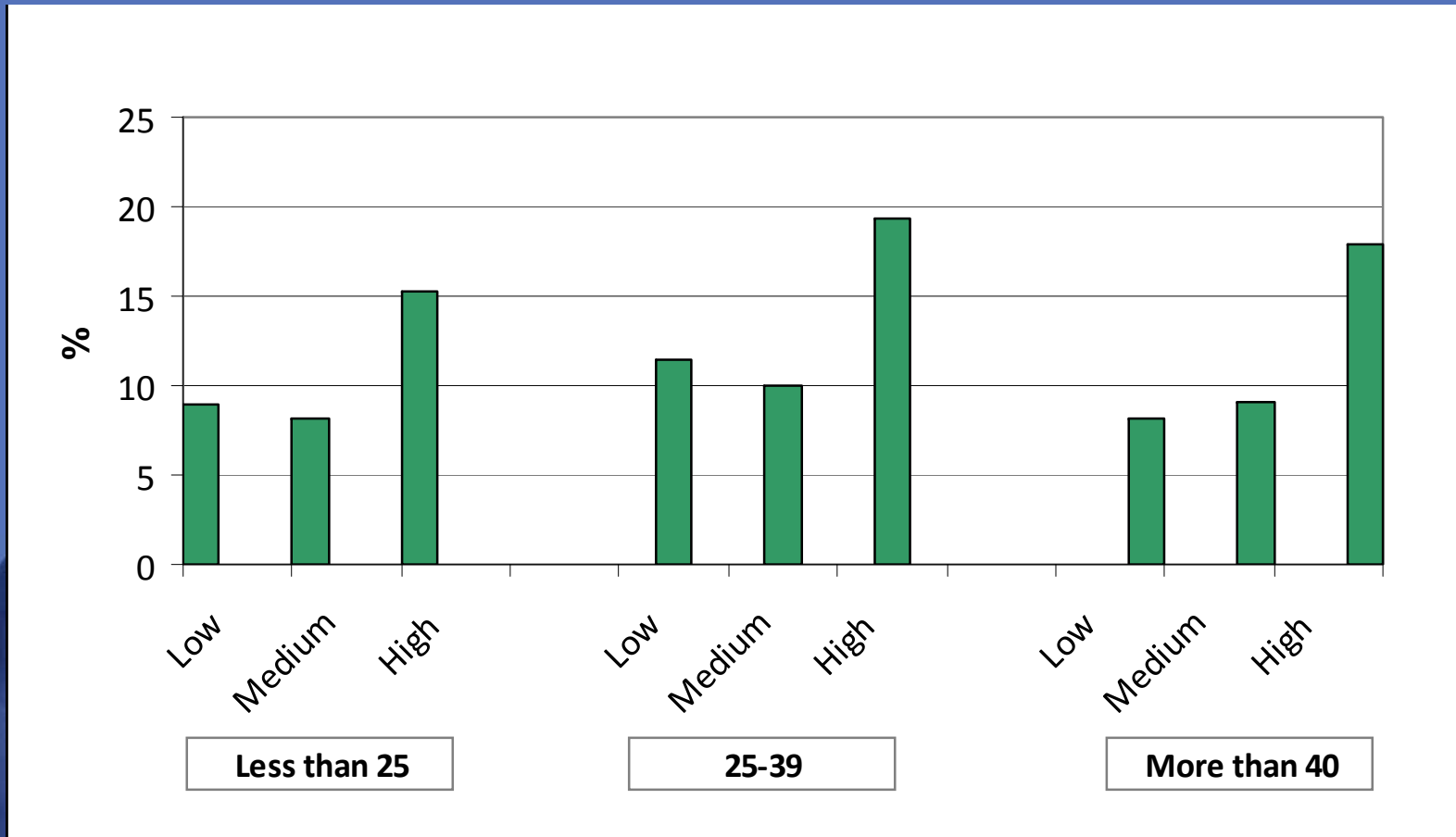


Socio-demographic characteristics

Variable	Migrant	Non-migrant
Be over 25 years old	82%	76%
Live in a city with over 500,000 inhabitants	60%	43%
Higher educational level	65%	47%
Gay or homosexual identity	78%	76%
Have received money in exchange for sex in the last year	7%	5%

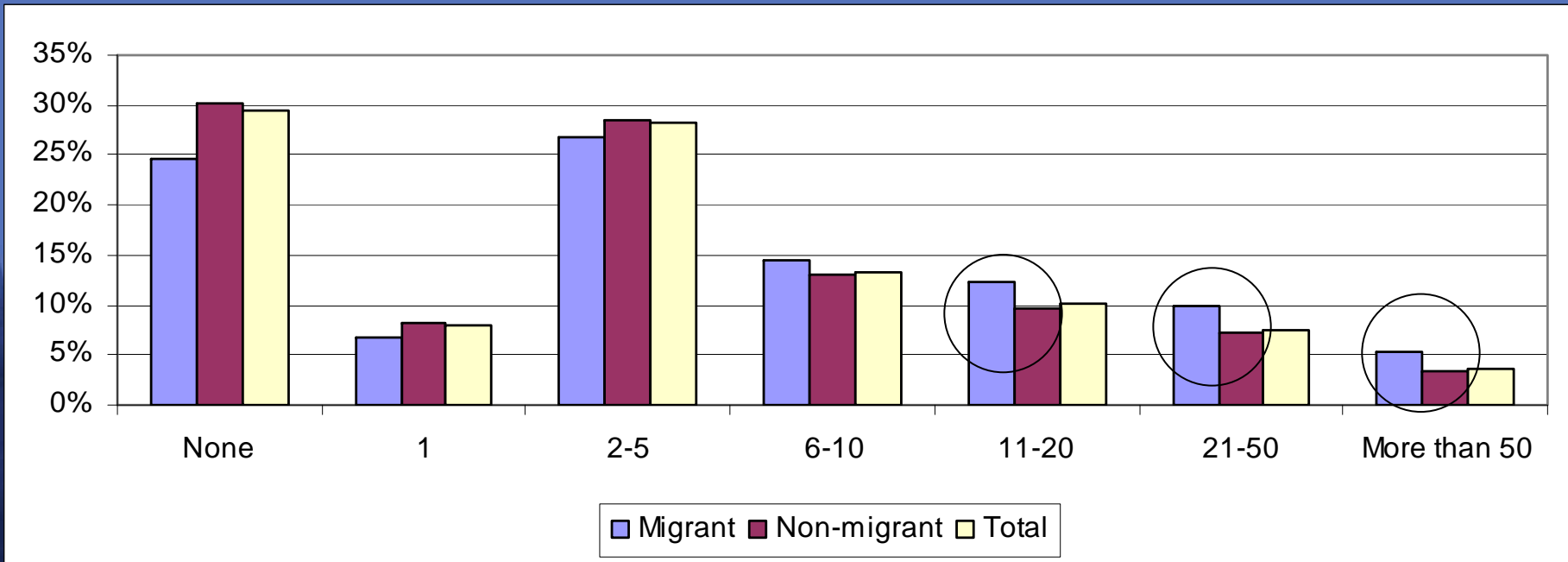
In all the cases, $p < 0.001$

Proportion of migrant MSM by education level and age group



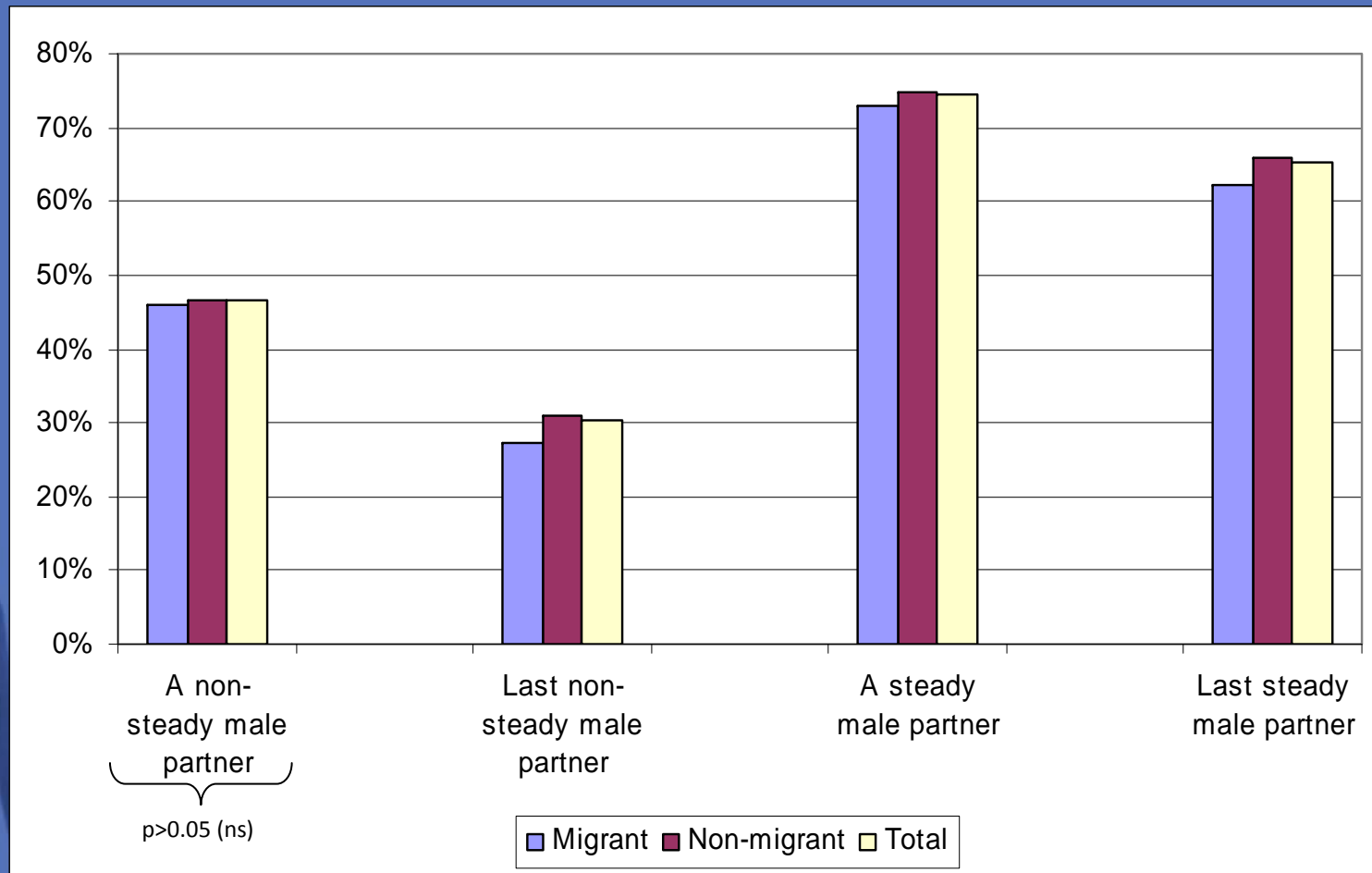
$p < 0.001$

Number of non-steady partners in last 12 months

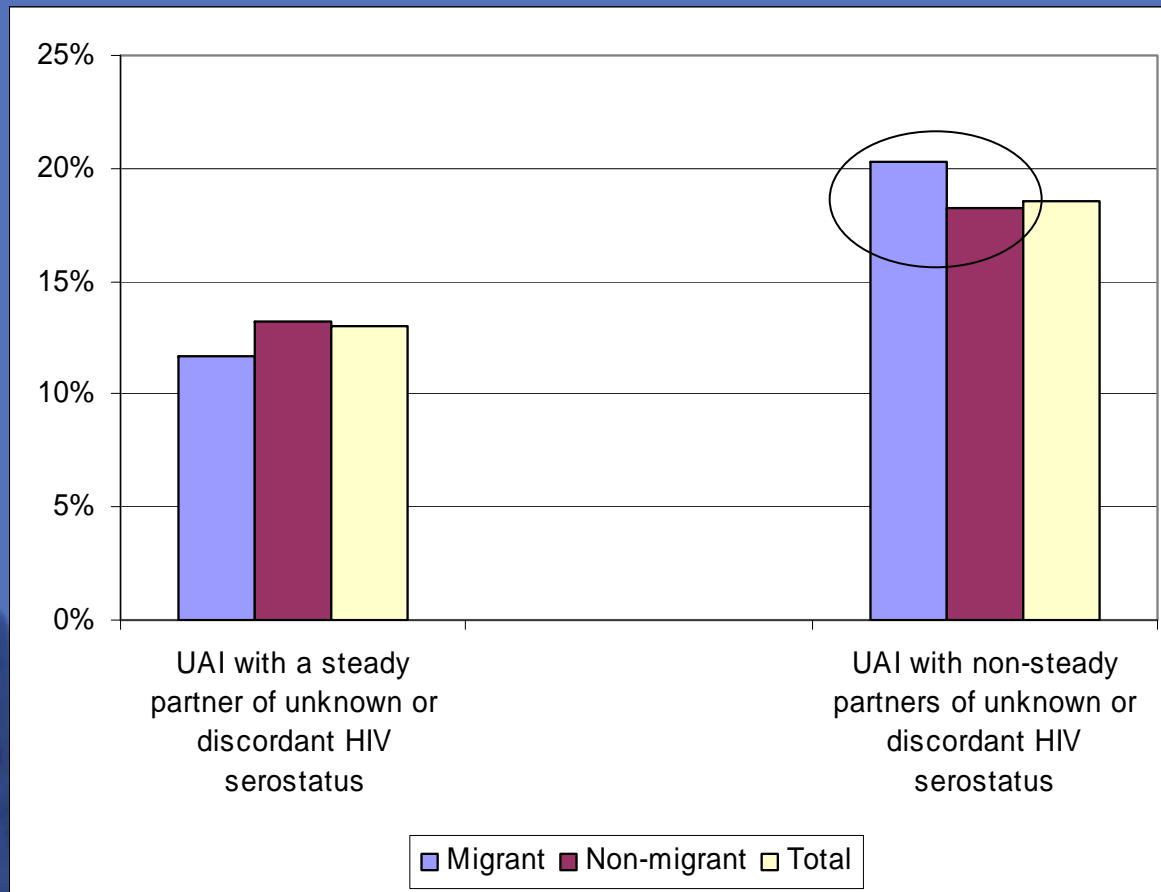


○ $p < 0.001$, [AOR= 1.32, CI-95%: 1.25-1.37]

Unprotected anal intercourse in last 12 months by type of partner

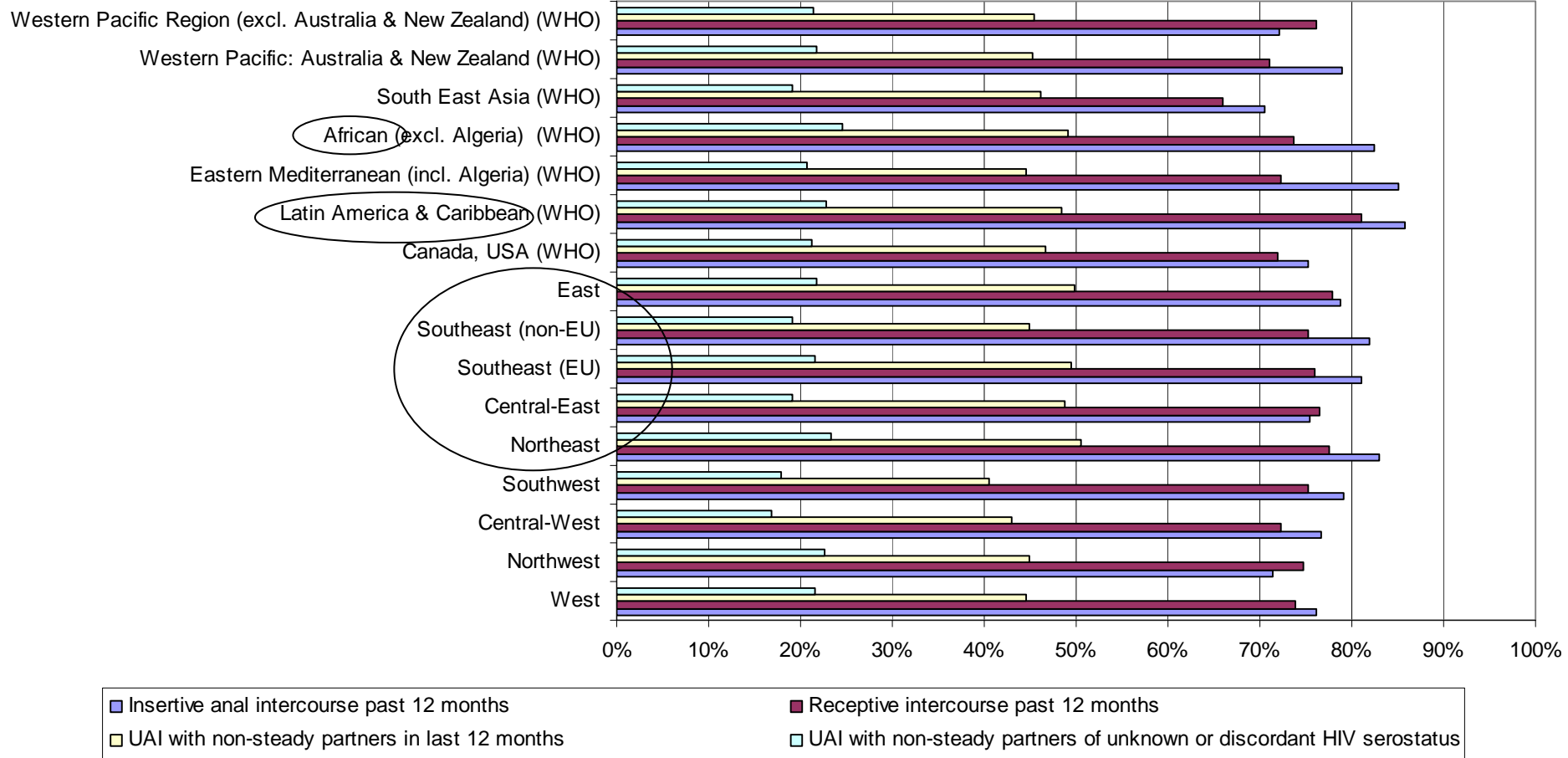


UAI and HIV transmission risk by type of partner in the last 12 months

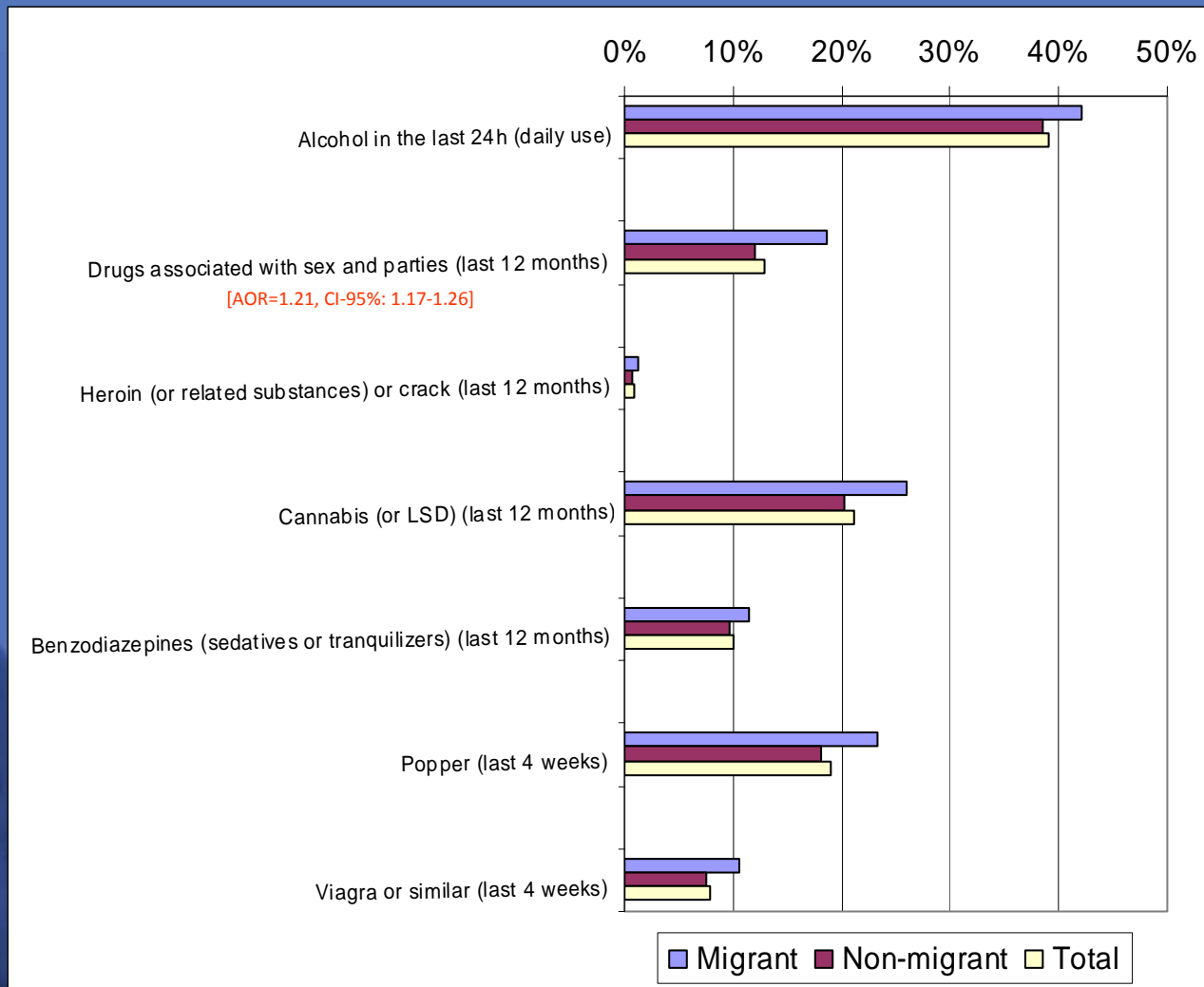


○ $p < 0.001$

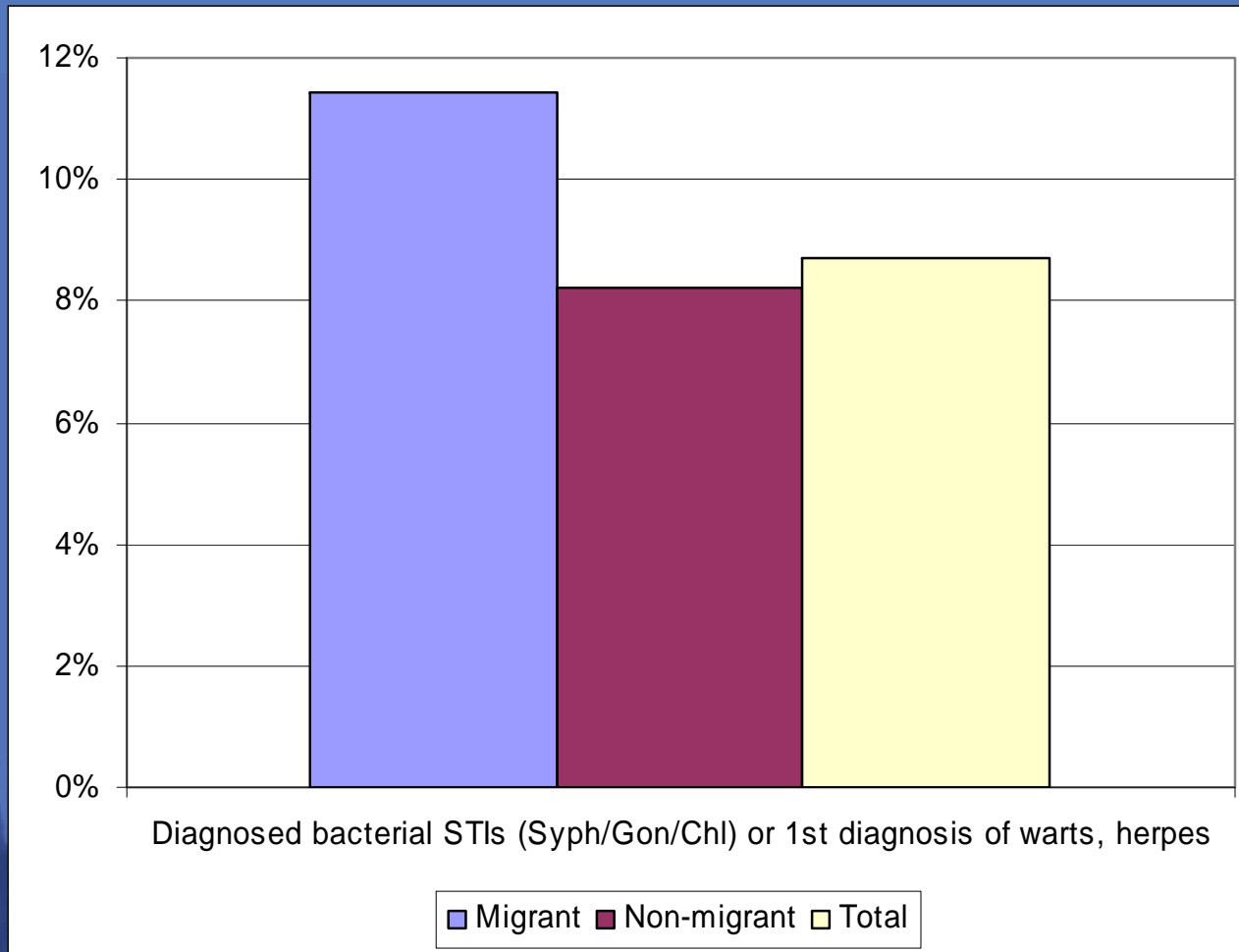
Sexual risk by region of origin



Drug use

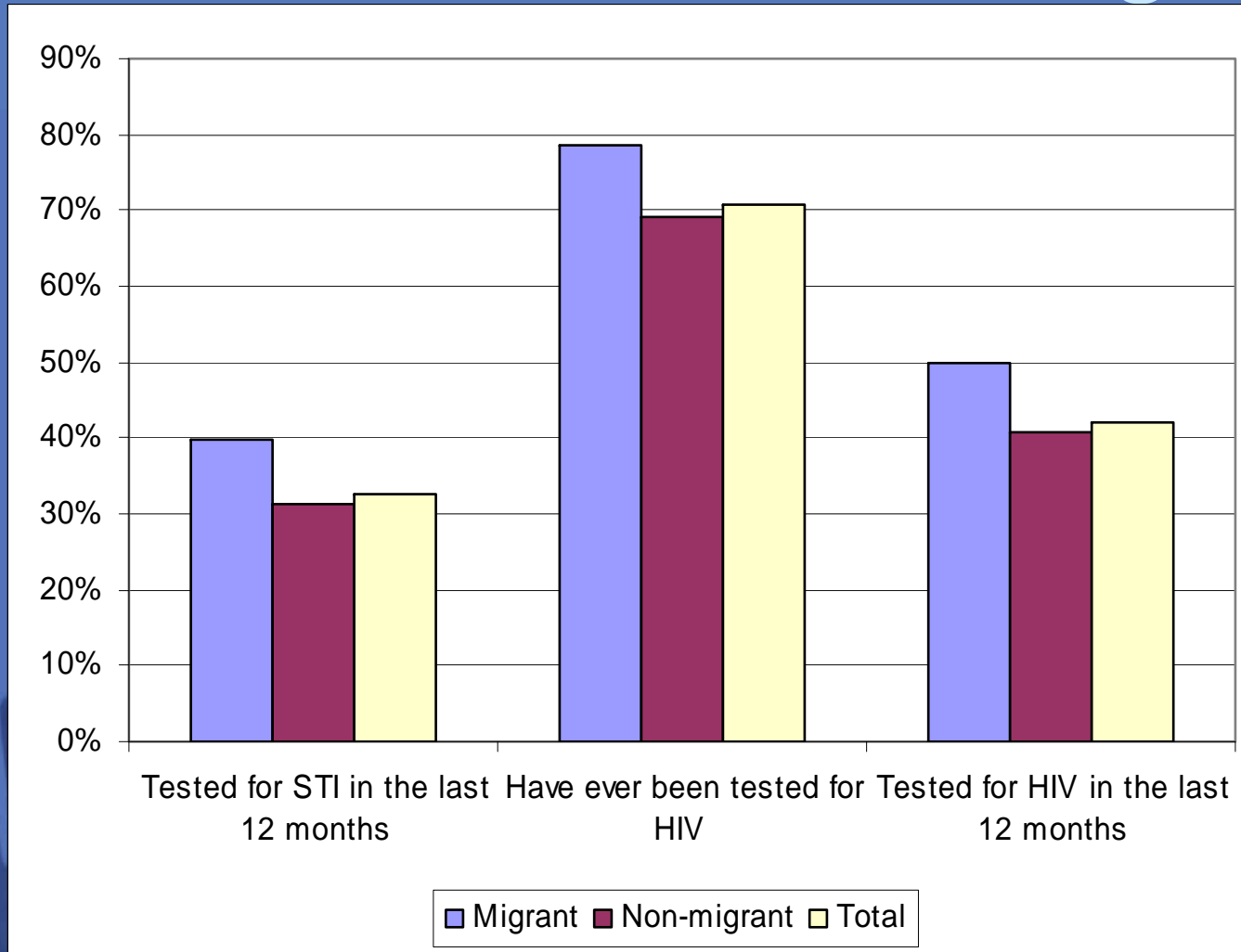


Diagnosis of any STI in the last 12 months



$p < 0.001$

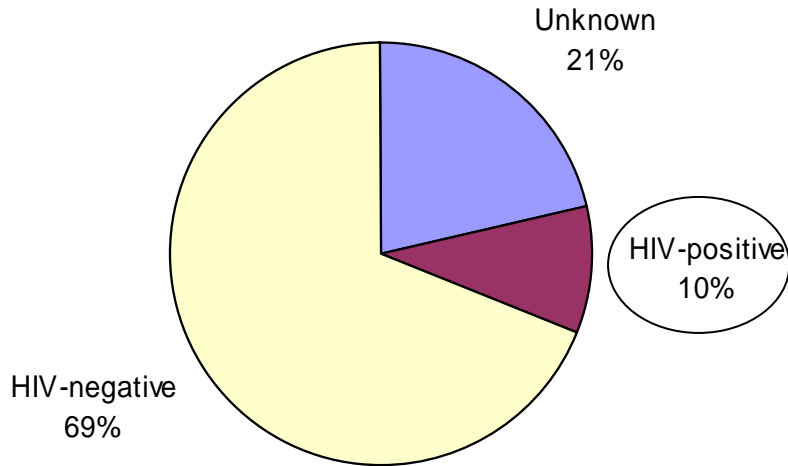
HIV and other STI testing



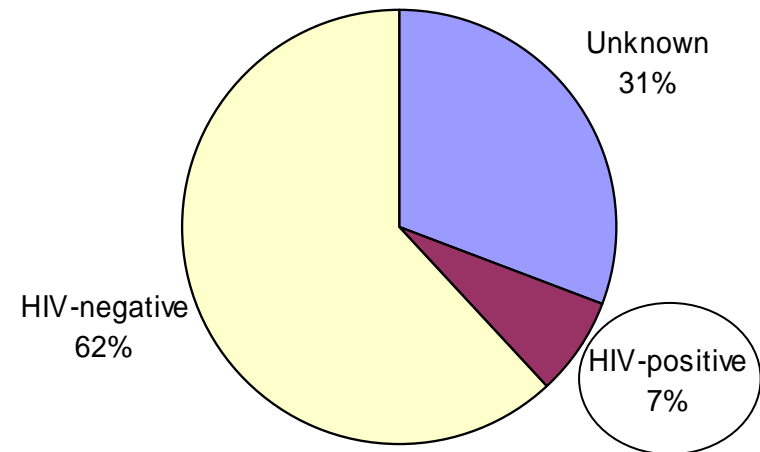
p<0.001

HIV status

Migrant

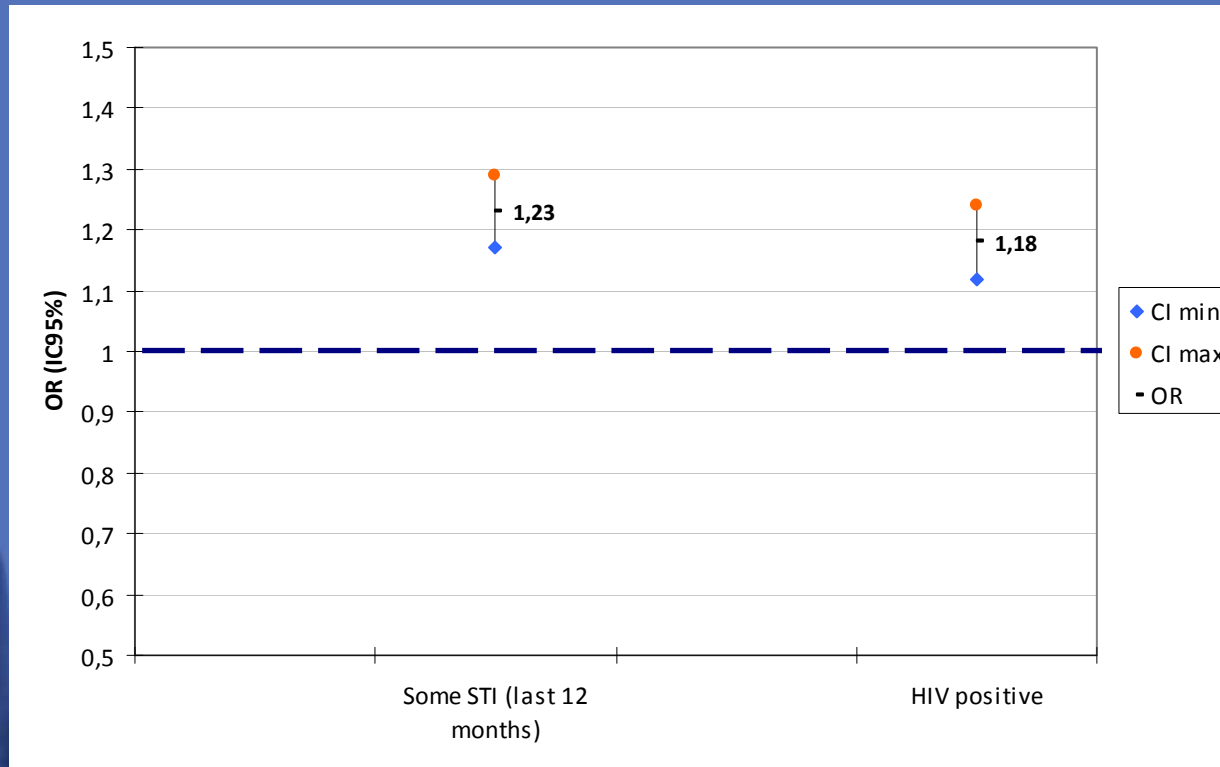


Non-migrant



$p < 0.001$

Associations between migration and HIV/STI status



Conclusions

- Most *migration* in EMIS is migration within the sub-region.
- Some associations were found between certain risk behaviours that may place migrant MSM at elevated risk for HIV and other STIs transmission.
- Being migrant is a condition that could lead to variety to behaviours (include sexual risk).
- Further subgroup analysis of migrant MSM in Europe is needed to contextualize migration experiences and to assess which migrant population are most in need of support.
- Specific prevention interventions should be tailored to this group.
- A limitation to this analysis is the broad definition of *migrant*.

Thank you for your attention!

More information @
www.emis-project.eu

Contact:
percy.fernandez.davila@emis-project.eu



Study coordination

Axel J. Schmidt (Robert Koch Institute, Berlin, DE)

Associated Scientists

Michele Breveglieri (Regional Centre for Health Promotion , Verona, IT)

Percy Fernández-Dávila (Centre for Epidemiological Studies on HIV/AIDS in Catalonia, ES)

Laia Ferrer (Centre for Epidemiological Studies on HIV/AIDS in Catalonia, ES)

Cinta Folch (Centre for Epidemiological Studies on HIV/AIDS in Catalonia, ES)

Ford Hickson (Sigma Research, London, UK)

Harm J. Hospers (Maastricht University, NL)

Ulrich Marcus (Robert Koch Institute, Berlin, DE)

Massimo Mirandola (Regional Centre for Health Promotion , Verona, IT)

David Reid (Sigma Research, London, UK)

Peter Weatherburn (Sigma Research, London, UK)

EMIS Collaborating Partners: **AT:** Aids-Hilfe Wien; **BE:** Institute of Tropical Medicine, Facultés Universitaires Saint-Louis, Ex Aequo, Sensoa, Arc-en-ciel; **BG:** National Centre of Infectious and Parasitic Diseases, Queer Bulgaria Foundation; **BY:** Vstrecha; **CH:** Institut universitaire de médecine sociale et préventive, Aids-Hilfe Schweiz; **CY:** Research Unit in Behaviour & Social Issues; **CZ:** Charles University (Institute of Sexology), Ceska spolecnost AIDS pomoc; **DE:** Berlin Social Science Research Center (WZB), Deutsche AIDS-Hilfe; Federal Centre for Health Education (BZgA); **DK:** Statens Serum Institut, Department of Epidemiology, stopaids; **ES:** National Centre of Epidemiology, stopsida, Ministry of Health and Social Politics; **EE:** National Institute for Health Development; **FI:** University of Tampere (Nursing Science), HIV-saatio/Aids-tukikeskus; **FR:** Institut de veille sanitaire (InVS), AIDeS, Act Up Paris, Sida Info Service, Le Kiosque, The Warning; **GR:** Positive Voice; **HR:** University of Zagreb (Humanities and Social Sciences); **HU:** Hungarian Civil Liberties Union (TASZ), Háttér; **IE:** Gay Men's Health Service, Health Services Executive; **IT:** University of Bologna, Arcigay, Istituto Superiore di Sanità; **LT:** Center for Communicable Diseases and AIDS; **LV:** The Infectiology Centre of Latvia; Mozaika; **MD:** GenderDoc-M; **MK:** Equality for Gays and Lesbians (EGAL); **NL:** schorer; **NO:** Norwegian Knowledge Centre for the Health Services, The Norwegian Institute of Public Health; **PL:** National AIDS Centre, Lambda Warszawa; **PT:** GAT Portugal, University of Porto (Medical School), Institute of Hygiene and Tropical Medicine; **RO:** PSI Romania **RS:** Safe Pulse of Youth; **RU:** PSI Russia, La Sky; **SE:** Malmö University, Riksförbundet för homosexuella, bisexuella och transpersoners rättigheter (RFSL); **SI:** National Institute of Public Health, Legebitra, ŠKUC-Magnus; **SK:** OZ Odysseus; **TR:** Turkish Public Health Association, KAOS-GL, Istanbul LGBTT, Siyah Pembe Uçgen Izmir; **UA:** Gay Alliance, Nash Mir, LiGA Nikolaev; **UK:** City University, London, CHAPS (Terrence Higgins Trust); **EU:** ILGA-Europe, Aids Action Europe, European AIDS Treatment Group, GayRomeo, Manhunt and Manhunt Cares

EMIS Advisory Partners: Executive Agency for Health and Consumers (EAHC), European Centre for Disease Prevention and Control (ECDC), WHO-Europe



Executive
Agency for
Health and
Consumers



Maastricht University

Sigma
RESEARCH



REGIONE DEL VENETO

ROBERT KOCH INSTITUT

